

Great Scott!

By Scott Goodman



Scott Goodman, owner of Sewing Machine Warehouse & Kneedle.com has been servicing the sewing public since 1976.

I'm Having a Mac Attack!

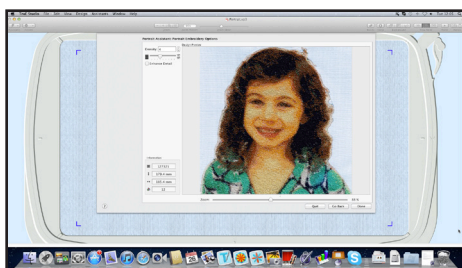
Our industry has treated Mac owners like the proverbial “red-headed stepchild”. Worldwide, *Mac*-based PCs barely make a dent in the total number of computer users. In the US, *Apple's* ubiquitous *iPhone* and *iPad* are increasing the number of *Mac* users, too. Great Scott!, true to his Gemini archetype, has both *Windows* computers at the office and an *iMac* at home.

TruEmbroidery Software™ is releasing a NEW COMPLETE DIGITIZING SUITE, written from the ground up, for *Mac*. Sorry for all the yelling, but this is a big deal. We're talkin' a brand new, stand-alone program, written specifically for *Mac OS*. The program will digitize from PDFs and all of the usual graphic formats. It is Object-Oriented...

Translation: Artwork (like a flower) is broken down into elements (petals, leaves, stems). Each element can be cut, pasted, duplicated, etc. *Mac* users will be greeted by a familiar interface, menus and gestures.

The software is made up of three modules: *Studio*, *Create*, and *Modify*. *Studio* allows you to combine, letter, personalize and preview on a garment. You can preview an embroidery design,

superimposed on a photograph of your project, with or without a human form. Imagine a picture of little Penelope in her holiday finery, previewed with a completed embroidery design in place. *Create* enables you to digitize automatically, manually and photo-realistically with the new Portrait Assistant. *Modify* is the playground where users will transform, cut, copy, paste and modify blocks and designs.



This program is being authored as I write this article, so some specifications may change. You can expect availability in October.

Tired of apologies? BERNINA is now supporting *Designer Plus V6.0* owners that live in a *Mac* world.

Designer's Gallery EmbroideryWorks Advanced is now *Mac* compatible! *EmbroideryWorks* is an embroidery utility that will: (taking a big breath)

Size, combine, remove hidden/unnecessary stitches, fix density, add lettering, appliqué, hoop split, convert format, stitch edit, and more. While it's not a full digitizing program, many of the utilities are not found in other full-featured programs. Certainly, a great program for your utility belt.

Other new embroidery product releases...

As you read this article, your local **BABY LOCK** dealer should be receiving the long-awaited new **Designer's Gallery MasterWorks III**. Sporting a new modern interface and new features, too... Techniques for trapunto, echo quilting, rhinestones. New drawing tools, a mask feature that crops to a shape like a stencil, a scatter function that resizes, repeats and rotates a design element throughout your hoop. Current users can purchase an upgrade at a reduced price.

BERNINA DesignWorks- CutWork, PaintWork and CrystalWork software brings some very sophisticated tricks to the table. You can easily create and repeat a multi-media, multi-discipline design with cutwork, ink, rhinestones

BERNINA's PaintWork



and embroidery. With *PaintWork*, a dye pen is affixed to the machine and your embroidery unit moves a hooped project underneath, creating a repeatable effect that can be combined with embroidery, cutwork and crystals. Mere emoticons cannot express my glee.

What's bigger than a 6 but not as big as an 8? BERNINA 7 Series has landed. Three new mid-arm sized sewing machines featuring 10 inches to the right of the needle (quilt alert). Check out their model 780E, a richly featured sewing and embroidery machine that is compatible with their new DesignWorks system.

JANOME's Horizon 12000 and 11000 owners can quilt in the hoop with *Acufil*[™]. Featuring an 8.7" x 8.7" frame with magnetic clamps, Horizon owners can select from 70 quilt files that can be combined and sized or create your own quilt designs.

Who doesn't like precious gems? **Husqvarna Viking** is borrowing the Thread Portioning System and dual threading path from their Diamond Deluxe, adding it to the Ruby, giving birth to the Ruby Deluxe. Thread portioning measures precise lengths of thread into the stitch without squeezing or pulling thread fibers like traditional tension devices.

Your local sewing machine dealer has just returned from annual product training. They are brimming with excitement and want to share all that they have learned. This is a great time to visit and play with the newest technology. "Up your game" with the latest fashion trends in embroidery and embellishment techniques. Tell 'em that Great Scott! said "Hi!"

Learn any cool tricks this summer? Do share...GreatScott@kneedle.com